



The

BRANTFORD GARDEN CLUB

proudly presents:

OUR

169TH FLOWER AND GARDEN SHOW



"LITTLE DITTIES FROM THE GARDEN"

LIONS PARK AUDITORIUM

20 Edge Street – parking access off Gilkison

OPEN TO THE PUBLIC

ONE DAY ONLY

SATURDAY JULY 27, 2024

2 PM TO 4:30 PM

FREE ADMISSION – EVERYONE WELCOME

AWARDS WILL BE PRESENTED AT 4 PM

DIVISION 1 – DESIGN

"Little Ditties From The Garden"

Class

1 **"Mary, Mary, Quite Contrary How Does Your Garden Grow?"**

A design using FRESH PLANT MATERIAL,
may include accessories



2 **"Jack And Jill Went Up The Hill"**

A vertical design using FRESH PLANT MATERIAL,
may include accessories



3 **"Rub A Dub Dub, Three Men In A Tub"**

A water-viewing design. Design must be
2/3rds water in a shallow container. FRESH PLANT MATERIAL,
may include accessories



4 **"Hey Diddle Diddle"**

A design using DRIED PLANT MATERIAL,
may include accessories



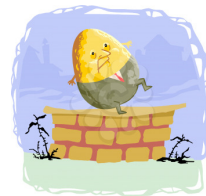
5 **"There Was An Old Woman Who Lived In A Shoe"**

A design using FRESH PLANT MATERIAL,
may include accessories



6 **"Humpty Dumpty Sat On A Wall"**

Miniature under 5" in width, height and depth,
using FRESH PLANT MATERIAL,
may include accessories



7 **"Jack Be Nimble"**

Miniature under 5" in width, height and depth,
using DRIED PLANT MATERIAL, may include accessories



DIVISION II – HORTICULTURE

SECTION A - SPECIMENS

| | | |
|----|--|---------|
| 8 | ACHILLEA (Yarrow) | 3 stems |
| 9 | ANTIRRHINUM (Snapdragon) medium cultivar | 1 stem |
| 10 | ANTIRRHINUM (Snapdragon) dwarf cultivar | 1 stem |
| 11 | ASTILBE (False Spirea, False Goatsbeard) | 1 stem |
| 12 | BEGONIAS (Fibrous) one cultivar | 2 stems |

Tuberous begonia – When showing a tuberous begonia specimen only, the large male bloom should be exhibited without the two smaller female side blooms on each side. OJES pg. 52

| | | |
|----|--|---------|
| 13 | BEGONIAS (Tuberous) float in bowl | 1 bloom |
| 14 | BEGONIAS (Tuberous) | 1 stem |
| 15 | CALENDULA (Pot Marigold) any cultivar | 3 stems |
| 16 | CAMPANULA (Bellflower) | 1 stem |
| 17 | CLEOME (Spider Flower) | 1 stem |
| 18 | COSMOS (Cosmos) any cultivar | 3 stems |
| 19 | COREOPSIS (Tickseed) any cultivar | 3 stems |
| 20 | DELPHINIUM (Delphinium) | 1 stem |
| 21 | ECHINACEA (Coneflower) one cultivar | 3 stems |
| 22 | ECHINACEA (Coneflower) mixed cultivars | 3 stems |
| 23 | GAILLARDIA (Blanket Flower) one cultivar | 3 stems |
| 24 | GERANIUM (Perennial Geranium) any cultivar | 1 stem |
| 25 | HELIANTHUS (Sunflower) | 1 bloom |
| 26 | HEMEROCALLIS (Daylily) cream or yellow | 1 stem |

| | | |
|----|---|----------|
| 27 | HEMEROCALLIS (Daylily) orange | 1 stem |
| 28 | HEMEROCALLIS (Daylily) red | 1 stem |
| 29 | HEUCHERA (Coral Bells)/HEUCHERELLA (Foamy Bells)/ TIARELLA (Foamflower) one cultivar | 3 leaves |
| 30 | HEUCHERA (Coral Bells)/HEUCHERELLA (Foamy Bells)/ TIARELLA (Foamflower) flowers one cultivar | 3 stems |

All Hosta (Plantain Lily) measured by leaf width at widest point

| | | |
|----|--|---------|
| 31 | HOSTA (Plantain Lily) Solid Colour, width 8" and under | 1 leaf |
| 32 | HOSTA (Plantain Lily) Variegated, width 8" and under | 1 leaf |
| 33 | HOSTA (Plantain Lily) Solid Colour, width over 8" | 1 leaf |
| 34 | HOSTA (Plantain Lily) Variegated, width over 8" | 1 leaf |
| 35 | LATHYRUS (Sweet Pea) any cultivar | 1 stem |
| 36 | LAVATERA (Mallow) any colour | 1 stem |
| 37 | LEUCANTHEMUM X SUPERBUM (Shasta Daisy) any cultivar | 3 stems |
| 38 | LILLIUM (Lily) any colour | 1 stem |
| 39 | LILLIUM (Lily) different colours, one cultivar | 2 stems |
| 40 | LILLIUM (Lily) different cultivars | 2 stems |
| 41 | MONARDA (Bee Balm) any cultivar | 3 stems |
| 42 | PETUNIA (Petunia) single one cultivar | 3 stems |
| 43 | PETUNIA (Petunia) double | 1 stem |
| 44 | PELARGONIUM (Annual Geranium) any cultivar | 1 stem |
| 45 | PHLOX (Garden Perennial) pink | 1 stem |
| 46 | PHLOX (Garden Perennial) purple | 1 stem |
| 47 | PHLOX (Garden Perennial) white | 1 stem |
| 48 | PLATYCODON (Balloon Flower) | 1 stem |

Coleus is no longer recognized and has been re-classified as Plectranthus "Solenostemon scutellarioides"

49 PLECTRANTHUS (Solenostemon scutellarioides) formerly known as Coleus
2 stems

A specimen rose is defined as one bloom per stem, no side buds allowed
A roses spray must have at least two or more blooms, 1/2 or more open, on one stem

50 ROSA (Rose) Hybrid Tea/Grandiflora 1 specimen bloom or 1 spray

51 ROSA (Rose) floated in bowl 1 specimen bloom

52 ROSA (Rose) Miniature any colour 1 specimen bloom or 1 spray

53 ROSA (Rose) Floribunda any colour 1 spray

54 ROSA (Rose) Climbing any colour 1 spray

55 ROSA (Rose) Shrub Rose Canadian Introductions eg John Cabot, Morden Blush, Oscar Peterson, Canadian Shield 1 specimen bloom or 1 spray

56 ROSA (Rose) Any other not previously listed (includes Polyantha, Carpet Rose, Austin Rose, Old Garden Rose) 1 specimen bloom or 1 spray

57 RUDBECKIA (Gloriosa Daisy) any cultivar 1 stem

58 SCABIOSA (Pin Cushion) 1 stem

59 SEDUM creeping (Stonecrop) 1 stem

60 SEDUM (Sedum) any cultivar not previously listed 1 stem

61 TAGETES (Marigold) any cultivar 3 blooms

62 TROPAEOLUM (Nasturtium) 1 stem

63 VERBENA (Common Vervain) any cultivar 3 stems

64 VIOLA (Pansy) one cultivar 3 stems

65 VIOLA (Pansy) different cultivars 2 stems

66 VIOLA (Johnny Jump Up, Garden Violet) any cultivar 3 stems

- | | | |
|----|--|---------|
| 67 | ZINNIA (Zinnia) any cultivar | 3 stems |
| 68 | Any other Annual not previously listed, named | 1 stem |
| 69 | Any other Perennial not previously listed, named | 1 stem |
| 70 | Vase of flowers one cultivar, named | |
| 71 | Vase of mixed flowers one only of each cultivar, minimum 5 cultivars, maximum 10 cultivars | |

SECTION B – HERBS

- | | | |
|----|-------------------------|---------|
| 72 | HERBS 3 cultivars named | 3 stems |
| 73 | HERB 1 cultivar named | 1 stem |

SECTIONS C – FLOWERING SHRUBS AND VINES

Entries 74, 75 AND 76 one branch/vine/stem maximum 18 inches length from lip of vase to tip of branch/vine/stem

- | | | |
|----|--|---------------|
| 74 | FLOWERING SHRUB in bloom, other than Hydrangea | 1 branch |
| 75 | FLOWERING VINE in bloom | 1 branch/stem |
| 76 | HYDRANGEA (Hydrangea) in bloom | 1 branch/stem |

SECTION D - HOUSE PLANTS

- | | | |
|----|---------------------------------------|--|
| 77 | CACTUS (Cactus) any cultivar | |
| 78 | FERN any cultivar | |
| 79 | HEDERA (Ivy) | |
| 80 | HOLIDAY CACTUS with or without blooms | |

- 81 HOUSE PLANT any other, grown for bloom
- 82 HOUSE PLANT any other, grown for foliage
- 83 HOYA CARNOSA (Hoya)
- 84 OTHER SUCCULENTS any cultivar
- 85 SAINTPAULIA (African Violet) standard single crown, any colour
- 86 SAINTPAULIA (African Violet) miniature, any colour

SECTION E – VEGETABLES AND FRUIT

For presentation of a specific vegetable see OJES pages 109-117.

- | | | |
|----|---|-------------|
| 87 | BEAN Green | 5 specimens |
| 88 | BEAN any other cultivar | 5 specimens |
| 89 | BEET tops trimmed to 1" | 3 specimens |
| 90 | GARLIC trim stem and roots to 1/2" | 3 specimens |
| 91 | ONION any cultivar | 3 specimens |
| 92 | PEAS | 5 specimens |
| 93 | RADISH tops trimmed to 1" | 5 specimens |
| 94 | VEGETABLE COLLECTION, any cultivar, displayed in a basket | |
| 95 | VEGETABLES, Mutant | 1 specimen |
| 96 | BERRIES | ½ Pint |
| 97 | CURRANTS | ½ Pint |
| 98 | RHUBARB, leaves trimmed to 2" fan shape | 3 Stalks |
| 99 | FRUIT, any other cultivar | 3 specimens |

DIVISION III – SPECIAL EXHIBITS

A Dish Garden is a number of horticulturally compatible plants growing in a shallow, open portable container. OJES pg 137

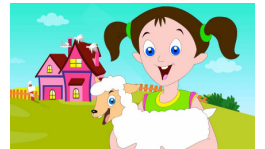
- 100 DISH GARDEN - SUCCULENT
- 101 DISH GARDEN - FOLIAGE AND/OR FLOWERING PLANTS
- 102 OUTDOOR PLANTER/POT – must be assembled by exhibitor

DIVISION IV – YOUTH

YOUTH DIVISION is open to youth aged 16 and under

DESIGN

- 103 **“Mary Had A Little Lamb”** Decorate the provided picture with fresh and dried plant material as desired, for example fresh flower petals/leaves, dried plant material, seeds, cones, bark. Can include accessories for example stickers, cotton.



HORTICULTURE

- 104 TAGETES (Marigold) in pot grown by youth from seed
- 105 ONION in pot grown by youth from bulb

SHOW ENTRY TIMES

Entries will be accepted on SATURDAY, JULY 27TH
from 9:30 am to 11:15 am

Judging begins sharply at 11:30 am

No entries will be accepted in hall after 11:15 am
and must be placed on table with completed entry tag by 11:25 am

RULES OF THE SHOW

1. Competition is open to MEMBERS OF THE BRANTFORD GARDEN CLUB ONLY.
2. All entries will be judged according to Ontario Judging and Exhibiting Standards for Floral Design and Horticulture, OJES 2019.
3. All entries must have official entry tags complete with exhibitor's number.
4. Exhibitor's number and entry tags will be available on the day of entry or at the June meeting.
5. Exhibitors are responsible to see that their entries are properly labelled and placed in the correct class. However, assistance will be available.
6. The decision of the Judge is final.
7. An exhibitor may enter any number of classes but can have only one entry in any one class.
8. No invasive, threatened or poisonous plants are allowed in the show. List at www.ontarioinvasiveplants.ca
9. DIVISION I, DESIGN, Fresh material may be obtained from any source. No artificial plant material allowed.
10. DIVISION II SECTION A, B, C SPECIMENS. All specimens must have been grown by the exhibitor.
11. DIVISION II SECTION D HOUSEPLANTS, from #77 to #86 must have been in the possession of the exhibitor for at least 3 months.
12. Exhibitors are to provide their own containers. The club has a limited number of containers available for flower specimens if you need one.
13. All reasonable care will be taken, but the Brantford Garden Club will not be responsible for exhibitor's property.
14. Entries are to remain in place until the close of the show.
15. Unless otherwise stated, multiples must be the same colour and variety.

FOR ALL QUERIES ON THE FLOWER SHOW
PLEASE CALL:
Carol Sterkenburg – 519-752-1980

FLOWER SHOW AWARDS

1. TOTAL POINTS FOR ALL CATEGORIES
 - First Prize
 - Second Prize
 - Third Prize
2. TOTAL HIGHEST POINTS DESIGN – DIVISION I
3. TOTAL POINTS IN SPECIMENS TO INCLUDE DIVISION II AND III
4. JUDGES' CHOICE - DESIGN – DIVISION I
5. BEST IN SHOW - SPECIMEN FROM 1ST RIBBONS IN DIVISION II OR III
6. TOTAL POINTS FOR FIRST TIME EXHIBITOR
7. PRESIDENT'S CHOICE
8. YOUTH HIGHEST POINTS - DIVISION IV

