



WINONA HORTICULTURAL SOCIETY

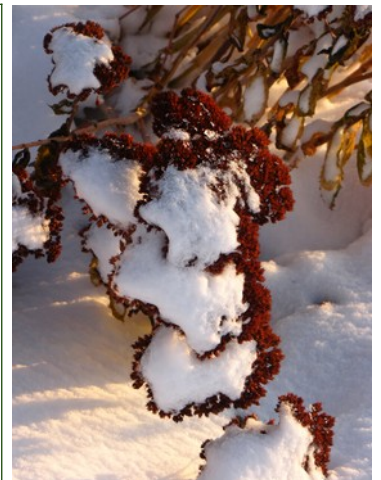
Celebration of Light

2024



Jan						
Su	Mo	Tu	We	Th	Fr	Sa
	1	2	3	4	5	6
7	8	9	10	11	12	13
14	15	16	17	18	19	20
21	22	23	24	25	26	27
28	29	30	31			

Feb						
Su	Mo	Tu	We	Th	Fr	Sa
				1	2	3
4	5	6	7	8	9	10
11	12	13	14	15	16	17
18	19	20	21	22	23	24
25	26	27	28	29		



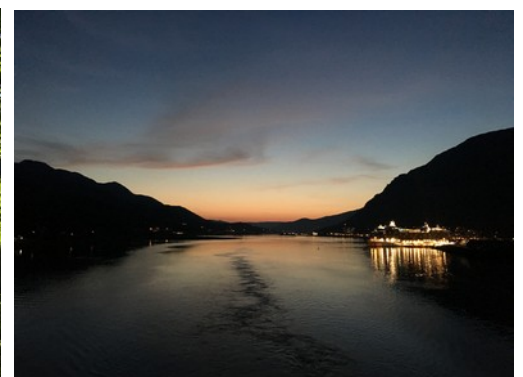
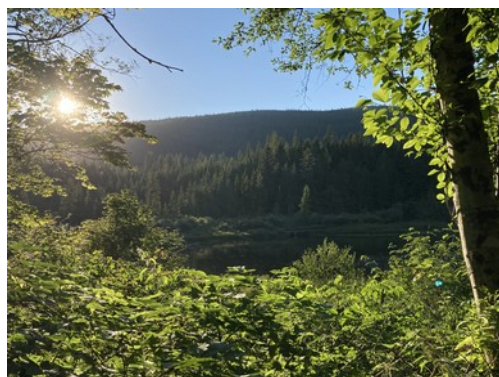
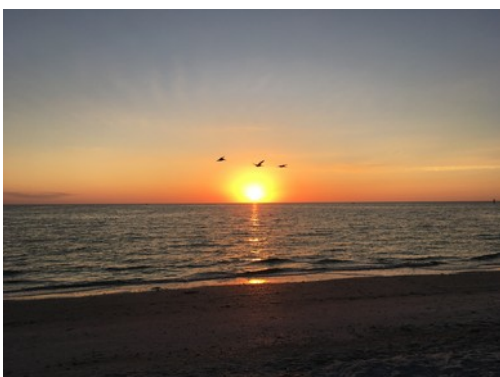
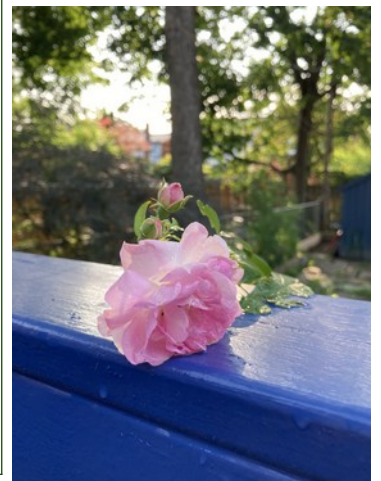
Mar						
Su	Mo	Tu	We	Th	Fr	Sa
					1	2
3	4	5	6	7	8	9
10	11	12	13	14	15	16
17	18	19	20	21	22	23
24	25	26	27	28	29	30
31						

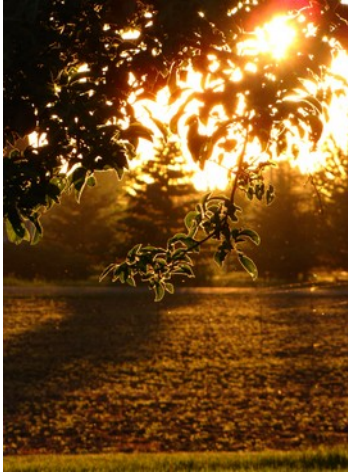
Apr						
Su	Mo	Tu	We	Th	Fr	Sa
	1	2	3	4	5	6
7	8	9	10	11	12	13
14	15	16	17	18	19	20
21	22	23	24	25	26	27
28	29	30				



May						
Su	Mo	Tu	We	Th	Fr	Sa
			1	2	3	4
5	6	7	8	9	10	11
12	13	14	15	16	17	18
19	20	21	22	23	24	25
26	27	28	29	30	31	

Jun						
Su	Mo	Tu	We	Th	Fr	Sa
						1
2	3	4	5	6	7	8
9	10	11	12	13	14	15
16	17	18	19	20	21	22
23	24	25	26	27	28	29
30						





Jul						
Su	Mo	Tu	We	Th	Fr	Sa
	1	2	3	4	5	6
7	8	9	10	11	12	13
14	15	16	17	18	19	20
21	22	23	24	25	26	27
28	29	30	31			

Aug						
Su	Mo	Tu	We	Th	Fr	Sa
				1	2	3
4	5	6	7	8	9	10
11	12	13	14	15	16	17
18	19	20	21	22	23	24
25	26	27	28	29	30	31

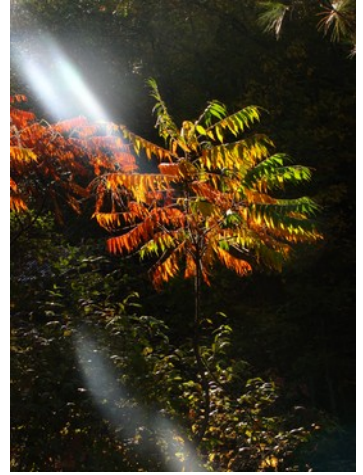
Sep						
Su	Mo	Tu	We	Th	Fr	Sa
1	2	3	4	5	6	7
8	9	10	11	12	13	14
15	16	17	18	19	20	21
22	23	24	25	26	27	28
29	30					

Oct						
Su	Mo	Tu	We	Th	Fr	Sa
		1	2	3	4	5
6	7	8	9	10	11	12
13	14	15	16	17	18	19
20	21	22	23	24	25	26
27	28	29	30	31		

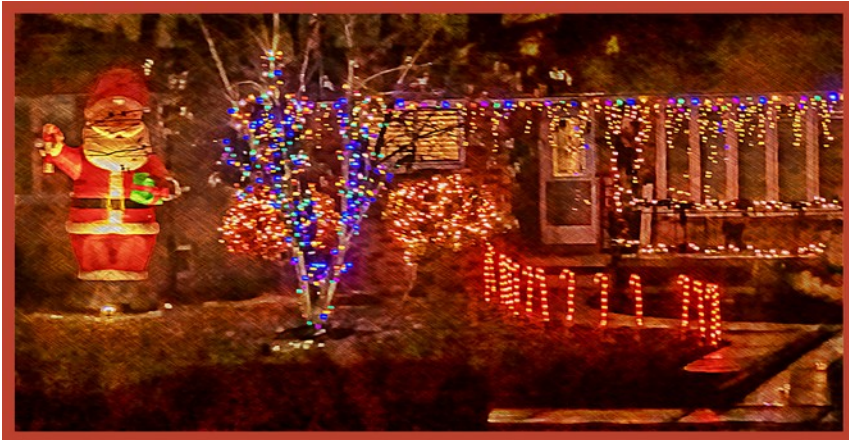
Nov						
Su	Mo	Tu	We	Th	Fr	Sa
					1	2
3	4	5	6	7	8	9
10	11	12	13	14	15	16
17	18	19	20	21	22	23
24	25	26	27	28	29	30

Dec						
Su	Mo	Tu	We	Th	Fr	Sa
1	2	3	4	5	6	7
8	9	10	11	12	13	14
15	16	17	18	19	20	21
22	23	24	25	26	27	28
29	30	31				

Calendar generated on www.timeanddate.com/calendar



Photos submitted by H el ene Br ul e-Besner, Ryan Inch, Maggie Martin, and Kathy Ward.



Notices and Events

ROYAL BOTANICAL GARDENS

680 Plains Road, Burlington

Winter Wonders – until January 7, 2024 (Thursdays to Sundays – some date exceptions apply)

This unique outdoor evening experience guides visitors along Hendrie Park's picturesque pathways to view sparkling festive lights, interactive installations and magical displays that tell the stories of unique winter wonders. Hark to the rhythm of festive music while indulging in the warm tastes and fragrances of the holiday season. Timed-tickets; registration required: Adults \$20 Child \$16 (+ HST and \$1 Service Fee)

RBG Express

Take a ride on the RBG Express during your day visit to the Gardens. Purchase tickets at the door to take a round-trip train ride through beautiful Hendrie Park to round out your RBG experience. First train is at 10:15am, last train is at 2:45pm. Trains depart every 15 minutes. Date exceptions: December 24, 25, 26, January 1. December 31: final train 2:15pm. (RBG closing 3pm.) \$10

Botanical Train Display

Huge planters made from almost 700 kg of cedar filled with 2,500 plants create a seasonal backdrop for seven different lines of model train tracks. Follow the trains on their journey past scale models of iconic Canadian landmarks constructed entirely from plant materials! No extra charge to full garden admission.

The Potting Bench – Saturday and Sundays 10:30 am to 4:30 pm

Stop by 'The Potting Bench' during your next visit to learn about what goes on behind the scenes in the greenhouse. Whether you're a seasoned gardener or just plain curious, drop in for interactive demos with knowledgeable volunteers. This holiday season, learn how to pot and care for amaryllis, force paper whites, and ask questions about how to care for poinsettias, and other holiday plants. Included in general admission.

Winter Exhibit: Nature's Superheroes – January 27, 2024 to April 21, 2024

Life is full of unexpected wonders. Over billions of years, living things have evolved from simple cells into an awe-inspiring array of life forms—a spectacle of colours, textures, behaviours, specialized parts and exacting skills. Some species are familiar, but others are so amazing that they test the limits of our imagination.

Don't miss RBG's winter exhibit, to experience "Life at the Limits"! (Organized by the American Museum of Natural History, New York amnh.org)

Wintertide – Thursdays to Saturdays, February 8 to March 16, 2024 5:30 to 10pm

Experience the brilliance of Canadian white winters like never before as the Rock Garden turns into the season's most elegant indoor *and outdoor* jazz lounge experience.

Adorned in glowing lights and roaring firepits the garden's natural winterscape is the perfect setting for a night out. Embrace the snowy paths or take in the view from inside the Rock Garden Visitor Centre while you enjoy live music, classic cocktails, and a seasonal winter offering at the Rock Garden Bistro.

RBG has partnered with T.U. Jazz Fest to bring live performances from emerging musicians and award-winning artists. **This is a 19+ event. I.D. required at the door.**

RBG offers a great lineup of fun, and educational programs for all ages. Call 905 527-1158 or visit their website www.rbg.ca To borrow the WHS member's passes contact H el ene or Krys.

NIAGARA PARKS FLORAL SHOWHOUSE ANNUAL POINSETTIA SHOW – until January 7, 2024

7145 Niagara Parkway, L2E 6X8 1 (877) 642-7275

Immerse yourself in an enchanting winter wonderland of vibrant colours as hundreds of meticulously cultivated poinsettias transform the iconic Floral Showhouse into a festive paradise. From traditional reds to unique, eye-catching varieties, these festive blooms will inspire holiday cheer. <https://www.niagaraparks.com/visit/nature-garden/floral-showhouse/>

BURLINGTON FESTIVAL OF LIGHTS – runs until January 8, 2024 4pm to midnight, daily

Spencer Smith Park, 1400 Lakeshore Rd., Burlington

The Festival of Lights illuminates Burlington's waterfront through December to early January, with extended hours (all day and night) on Christmas Eve, Christmas Day, Orthodox Christmas and New Year's Eve! Bring the whole family to stroll through the park and see the themed and magical displays. <https://burlingtonfestivaloflights.com/>

WHS NEXT MEETING – Wednesday, January 17, 2024 7:30pm

St. John's Anglican Church Hall, Winona

WHS BOARD MEETING – Wednesday, January 24, 2024 7pm

At Anne's.

To love beauty is to see light. Victor Hugo
How can one love light and live in darkness? Brent Weeks
Every moment is made glorious by the light of love. Rumi

Winter Solstice – the Return of Light

On December 21, Winter Solstice occurs as the sun travels the shortest path through the sky, giving us the longest, darkest night of the year. Solstice happens twice a year, (winter and summer) and marks the exact moment that one of the Earth's poles is at its maximum tilt. The word "solstice" is derived from the Latin "sol" meaning the sun, and "sistere" meaning to stand still. For an astronomical moment in time, the sun stands completely still.

Winter solstice is a time to give thanks to the sun for making its return once again. It's a time to honour the farmers who grow our food, and give thanks to the plants and animals for contributing to the wealth of the land.

In Celtic and Pagan cultures, Winter Solstice, or "Yule" has been celebrated for centuries as a rebirth of the sun, and of great resilience to endure the dark, cold days before the sun's radiance returns once again. The promise of Spring's life force, fertility and abundance brought faith and hope inside the winter's barren, dark times.

Ancient Roman times saw the festival of "Saturnalia" as a reflection of the winter solstice's magic, transforming Rome into a realm of light and unity. Streets and homes were adorned with festive garlands and lights, mirroring the returning sun's light.

Nowadays, many people all over the world mark the Solstice with rituals and celebrations that reflect the enduring hope and joy brought by the returning light during the year's coldest and darkest times.

<https://www.ekhartyoga.com/articles/practice/the-winter-solstice-return-to-light>

<https://wanderlust.com/journal/winter-solstice-honoring-the-return-of-light/>

<https://www.mysticdoorway.com/winter-solstice/>

Light the Lights at Christmas

Tracing back to Germany in the 1500s, it's believed the idea to put lights on trees was started by Martin Luther, a famous priest who was inspired by the prettiness of stars twinkling between evergreens while walking home one night.

The use of special lights for Christmas originally started with putting small candles on Christmas trees in the home. However, using candles wasn't ideal: they had to be placed and secured very carefully to avoid accidentally making the tree catch fire! So in the late 1800s, shortly after Thomas Edison invented the light bulb, one of Edison's employees came up with the idea of making small electrical lights for use on Christmas trees, which would be much safer than the candles!

Edison needed to convince the public that electric lights were the future, but the light bulb had yet to take the world by storm. One of Edison's executives, Edward Johnson, had a brilliant idea. He could string a few coloured bulbs together and display them on his Christmas tree, which was in a

street-facing window in his townhouse along Fifth Avenue in New York. If people saw his light display, they'd surely stop by. It was enough to get the attention of many wealthy Americans, but at \$12 a pop (\$300 in today's money), electric lights were out of reach for many.

Eventually, light bulb prices fell, and in 1895, President Grover Cleveland put up the first Christmas tree with lights in the White House. By 1925, other companies manufactured Christmas lights, which became safer to use, and cheaper.

Today, people still decorate their trees and homes with Christmas lights! For some people, it's a symbol of the starry sky in the story of Christmas on the night Jesus was born; it's also become a tradition and something many people think is beautiful!

<https://www.whyzz.com/stories/why-do-we-put-up-christmas-lights>

<https://www.grunge.com/285184/the-origin-of-christmas-lights-explained/>

*May the light of love shine within you,
as the magic of Christmas
fills your hearts and homes.*

Happy Holidays!
from the WHS Board of Directors

Members' Corner

We welcome your comments and suggestions. Who would you like to have as future speakers? What kind of topics or activities interest you? Share gardening tips, or pictures of your yard or garden. Please, drop us a line, send an e-mail or talk to one of the Board members. This is the 2024 Board:

President – Hélène Brûlé-Besner
905 977-9329 hebrulebesner@gmail.com

Vice-president – Mark Shufflebottom
905 226-3127 shufflebottom.mark@gmail.com

Secretary – position open

Treasurer – Krysm Moraal
905 643-4592 krysm@yahoo.com

Newsletter Editor &
Past President – Joy Brunel
905 643-3073 potsherds@gmail.com

Directors:
Georgina Beattie Ryan Inch
Anne Bono Maggie Martin
Greta Carpenter Rien Moraal
Mike Guerin Rosemary Salisbury

Mailing address: WHS
P. O. Box 10596,
Winona, ON L8E 5R1

Website: <https://gardenontario.org/society-listing/entry/553/>